

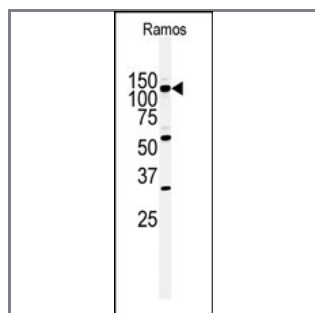
HIPK2 Antibody (N-term D69)

Peptide Affinity Purified Rabbit Polyclonal Antibody (Pab)

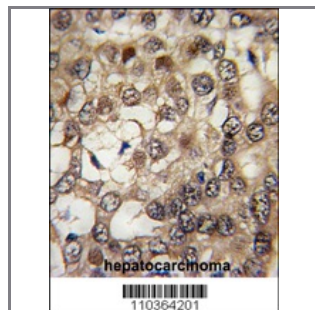
Catalog #	Applications:	Reactivity:	Accessions:
AP7539e	WB, IHC, E	H	Q9H2X6
Concentration:	Size:	Isotype:	Clone Name:
0.25 mg/ml	0.1 mg	Rabbit Ig	RB10364

Application Data:

Calculated MW: 130965 Da



Western blot analysis of anti-HIPK2 Antibody (N-term D69) (Cat. #AP7539e) in Ramos cell line lysates (35ug/lane). HIPK2 (arrow) was detected using the purified Pab (1:200 dilution).



Formalin-fixed and paraffin-embedded human hepatocarcinoma tissue reacted with HIPK2 Antibody (N-term) (Cat.#AP7539e), which was peroxidase-conjugated to the secondary antibody, followed by DAB staining. This data demonstrates the use of this antibody for immunohistochemistry; clinical relevance has not been evaluated.

Gene ID:	Gene Symbol:
28996	HIPK2

Other Names:

Homeodomain-interacting protein kinase 2

Target/Specificity:

This HIPK2 antibody is generated from rabbits immunized with a KLH conjugated synthetic peptide between 62~92 amino acids from the N-terminal region of human HIPK2.

Application Notes:

The suggested dilution is:
ELISA 1:1,000

Western blotting 1:100~250
Immunohistochemistry 1:10~50

Format:

Purified polyclonal antibody supplied in PBS with 0.09% (W/V) sodium azide. This antibody is purified through a protein A column, followed by peptide affinity purification.

Storage:

Maintain refrigerated at 2-8°C for up to 6 months. For long term storage store at -20°C in small aliquots to prevent freeze-thaw cycles.

Precautions:

HIPK2 Antibody (N-term D69) is for research use only and not for use in diagnostic or therapeutic procedures.
