

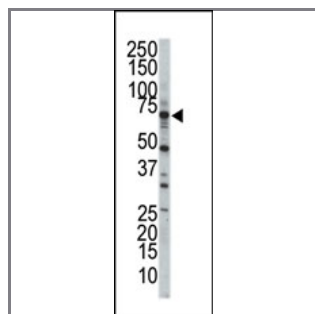
STK23 (MSSK1) Antibody (Center)

Purified Rabbit Polyclonal Antibody (Pab)

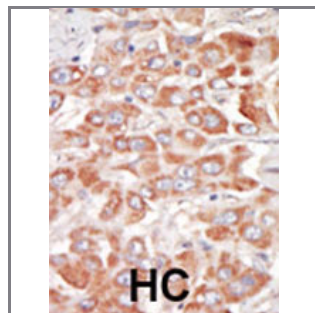
Catalog #	Applications:	Reactivity:	Accessions:
AP7544c	WB, IHC, E	H	Q9UPE1 , NP_001164232
Concentration:	Size:	Isotype:	Clone Name:
0.25 mg/ml	0.1 mg	Rabbit Ig	RB3351

Application Data:

Calculated MW: 58996 Da



Western blot analysis of anti-MSSK1 Pab (Cat. #AP7544c) in A375 cell lysate. MSSK1 (arrow) was detected using purified Pab. Secondary HRP-anti-rabbit was used for signal visualization with chemiluminescence.



Formalin-fixed and paraffin-embedded human cancer tissue reacted with the primary antibody, which was peroxidase-conjugated to the secondary antibody, followed by DAB staining. This data demonstrates the use of this antibody for immunohistochemistry; clinical relevance has not been evaluated. BC = breast carcinoma; HC = hepatocarcinoma.

Gene ID: [26576](#)

Gene Symbol:

Other Names:

"Serine/threonine protein kinase 23, Muscle-specific serine kinase 1"

Target/Specificity:

This STK23 (MSSK1) antibody is generated from rabbits immunized with a KLH conjugated synthetic peptide between 292~321 amino acids from the center region of human MSSK1.

Application Notes:

The suggested dilution is:

ELISA 1:1,000
Western blotting 1:100~500
Immunohistochemistry 1:50~100

Format:

Purified polyclonal antibody supplied in PBS with 0.09% (W/V) sodium azide. This antibody is purified through a protein G column, eluted with high and low pH buffers and neutralized immediately, followed by dialysis against PBS.

Storage:

Maintain refrigerated at 2-8°C for up to 6 months. For long term storage store at -20°C in small aliquots to prevent freeze-thaw cycles.

Precautions:

STK23 (MSSK1) Antibody (Center) is for research use only and not for use in diagnostic or therapeutic procedures.
