

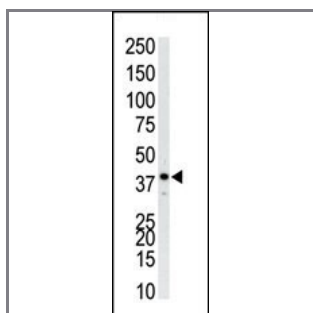
MAPK14 Antibody (C-term)

Purified Rabbit Polyclonal Antibody (Pab)

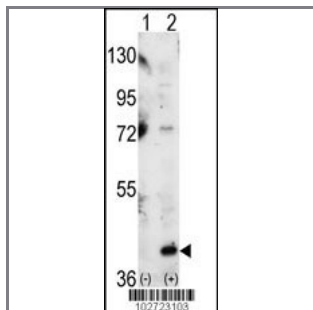
Catalog #	Applications:	Reactivity:	Accessions:
AP7546b	WB, FC, E	H	Q16539

Concentration:	Size:	Isotype:	Clone Name:
0.25 mg/ml	0.1 mg	Rabbit Ig	RB2723

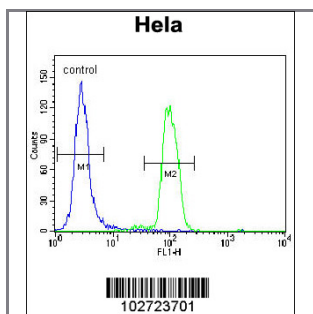
Application Data: **Calculated MW: 41293 Da**



The anti-P38 Pab (Cat. #AP7546b) is used in Western blot to detect P38 in Jurkat cell lysate.



Western blot analysis of P38 (arrow) using P38 Antibody (C-term) (Cat.#AP7546b). 293 cell lysates (2 ug/lane) either nontransfected (Lane 1) or transiently transfected with the MAPK14 gene (Lane 2) (Origene Technologies).



MAPK14 Antibody (C-term) (Cat. #AP7546b) flow cytometric analysis of HeLa cells (right histogram) compared to a negative control cell (left histogram). FITC-conjugated goat-anti-rabbit secondary antibodies were used for the analysis.

Gene ID:	Gene Symbol:
1432	MAPK14

Other Names:

"Mitogen-activated protein kinase 14, Mitogen-activated protein kinase p38alpha, MAP kinase p38alpha, Cytokine suppressive anti-inflammatory drug binding protein, CSAID binding protein, CSBP, MAX-interacting protein 2, MAP kinase MXI2, SAPK2A"

Target/Specificity:

This MAPK14 (p38) antibody is generated from rabbits immunized with a KLH conjugated synthetic peptide between 302~332 amino acids from the C-terminal region of human P38.

Application Notes:

The suggested dilution will be:

ELISA 1:1,000

Western blotting 1:100~500

Flow cytometry

Flow cytometric 1:10~50

Format:

Purified polyclonal antibody supplied in PBS with 0.09% (W/V) sodium azide. This antibody is purified through a protein G column, eluted with high and low pH buffers and neutralized immediately, followed by dialysis against PBS.

Storage:

Maintain refrigerated at 2-8°C for up to 6 months. For long term storage store at -20°C in small aliquots to prevent freeze-thaw cycles.

Precautions:

MAPK14 (p38) Antibody (C-term) is for research use only and not for use in diagnostic or therapeutic procedures.
