

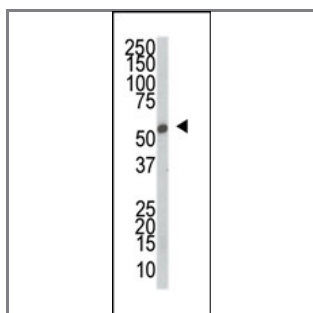
SRPK2 Antibody (C-term)

Purified Rabbit Polyclonal Antibody (Pab)

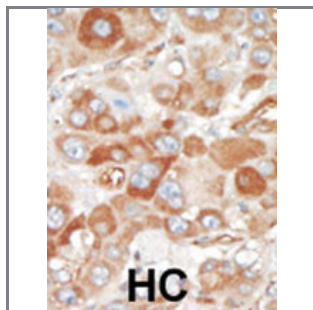
| Catalog # | Applications: | Reactivity: | Accessions: |
|----------------|---------------|-------------|------------------------|
| AP7553b | WB, IHC, E | H, M | P78362 |
| Concentration: | Size: | Isotype: | Clone Name: |
| 0.25 mg/ml | 0.1 mg | Rabbit Ig | RB3353 |

Application Data:

Calculated MW: 77423 Da



Western blot analysis of anti-SRPK2 Pab (Cat. #AP7553b) in mouse thymus tissue lysate. SRPK2 (arrow) was detected using purified Pab. Secondary HRP-anti-rabbit was used for signal visualization with chemiluminescence.



Formalin-fixed and paraffin-embedded human cancer tissue reacted with the primary antibody, which was peroxidase-conjugated to the secondary antibody, followed by DAB staining. This data demonstrates the use of this antibody for immunohistochemistry; clinical relevance has not been evaluated. BC = breast carcinoma; HC = hepatocarcinoma.

| Gene ID: | Gene Symbol: |
|----------------------|--------------|
| 6733 | SRPK2 |

Other Names:

Serine kinase SRPK2

Target/Specificity:

This SRPK2 antibody is generated from rabbits immunized with a KLH conjugated synthetic peptide between 472~501 amino acids from the C-terminal region of human SRPK2.

Application Notes:

The suggested dilution is:
ELISA 1:1,000

Western blotting 1:100~500
Immunohistochemistry 1:50~100

Format:

Purified polyclonal antibody supplied in PBS with 0.09% (W/V) sodium azide. This antibody is purified through a protein G column, eluted with high and low pH buffers and neutralized immediately, followed by dialysis against PBS.

Storage:

Maintain refrigerated at 2-8°C for up to 6 months. For long term storage store at -20°C in small aliquots to prevent freeze-thaw cycles.

Precautions:

SRPK2 Antibody (C-term) is for research use only and not for use in diagnostic or therapeutic procedures.
