

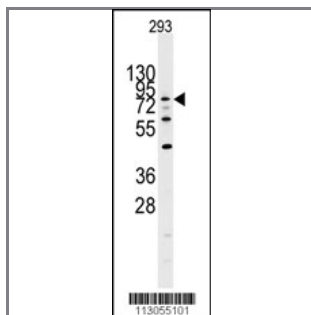
DYRK1A Antibody (N-term)

Purified Rabbit Polyclonal Antibody (Pab)

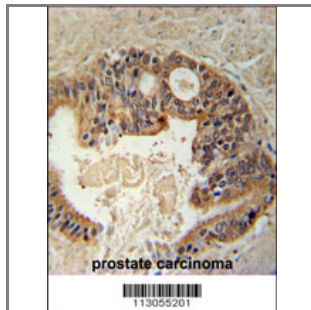
Catalog #	Applications:	Reactivity:	Accessions:
AP7555a	WB, IHC	H	Q13627

Concentration:	Size:	Isotype:	Clone Name:
0.25 mg/ml	0.1 mg	Rabbit Ig	RB13055

Application Data: Calculated MW: 85453 Da



Western blot analysis of DYRK1A Antibody (N-term) (Cat.#AP7555a) in 293 cell line lysates (35ug/lane). DYRK1A (arrow) was detected using the purified Pab (1:60 dilution).



DYRK1A Antibody (N-term) (Cat.#AP7555a) immunohistochemistry analysis in formalin fixed and paraffin embedded human prostate carcinoma followed by peroxidase conjugation of the secondary antibody and DAB staining. This data demonstrates the use of the DYRK1A Antibody (N-term) for immunohistochemistry. Clinical relevance has not been evaluated.

Gene ID:	Gene Symbol:
1859	DYRK1A

Other Names:

Protein kinase minibrain homolog; MNBH; HP86; Dual specificity YAK1-related kinase; hMNB

Target/Specificity:

This DYRK1A antibody is generated from rabbits immunized with a KLH conjugated synthetic peptide between 114~144 amino acids from the N-terminal region of human DYRK1A.

Application Notes:

The suggested dilution is:
 ELISA 1:1,000

Western blotting 1:50~100
Immunohistochemistry 1:50~100

Format:

Purified rabbit polyclonal antibody supplied in PBS with 0.09% (W/V) sodium azide. This antibody is purified through a protein A column, eluted with high and low pH buffers and neutralized immediately, followed by dialysis against PBS.

Storage:

Maintain refrigerated at 2-8°C for up to 6 months. For long term storage store at -20°C in small aliquots to prevent freeze-thaw cycles.

Precautions:

DYRK1A Antibody (N-term) is for research use only and not for use in diagnostic or therapeutic procedures.
