

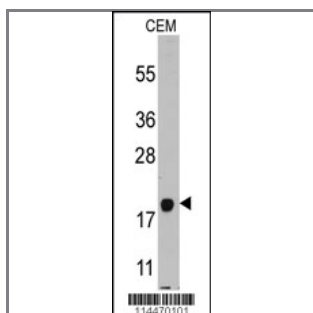
PBP (PPBP) Antibody (C-term)

Purified Rabbit Polyclonal Antibody (Pab)

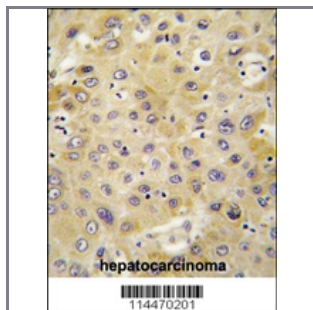
| Catalog # | Applications: | Reactivity: | Accessions: |
|-----------|---------------|-------------|------------------------|
| AP7556b | WB, IHC, E | H | P02775 |

| Concentration: | Size: | Isotype: | Clone Name: |
|----------------|--------|-----------|-------------|
| 0.25 mg/ml | 0.1 mg | Rabbit Ig | RB14470 |

Application Data: Calculated MW: 13894 Da



Western blot analysis of anti-PPBP Pab (Cat.#AP7556b) in CEM cell line lysates (35ug/lane). PPBP (arrow) was detected using the purified Pab (1:60 dilution).



Formalin-fixed and paraffin-embedded human hepatocarcinoma tissue reacted with PPBP antibody (C-term) (Cat.#AP7556b), which was peroxidase-conjugated to the secondary antibody, followed by DAB staining. This data demonstrates the use of this antibody for immunohistochemistry; clinical relevance has not been evaluated.

| Gene ID: | Gene Symbol: |
|----------------------|--------------|
| 5473 | PPBP |

Other Names:

Platelet basic protein [Precursor]; PBP; C-X-C motif chemokine 7; Small-inducible cytokine B7; Leukocyte-derived growth factor; LDGF; Macrophage-derived growth factor; MDGF; PPBP

Target/Specificity:

This PBP (PPBP) antibody is generated from rabbits immunized with a KLH conjugated synthetic peptide between 99~128 amino acids from the C-term of human PPBP.

Application Notes:

The suggested dilution is:

ELISA 1:1,000
Western blotting 1:50~100
Immunohistochemistry 1:10~50

Format:

Purified polyclonal antibody supplied in PBS with 0.09% (W/V) sodium azide. This antibody is prepared by Saturated Ammonium Sulfate (SAS) precipitation followed by dialysis against PBS.

Storage:

Maintain refrigerated at 2-8°C for up to 6 months. For long term storage store at -20°C in small aliquots to prevent freeze-thaw cycles.

Precautions:

PBP (PPBP) Antibody (C-term) is for research use only and not for use in diagnostic or therapeutic procedures.
