

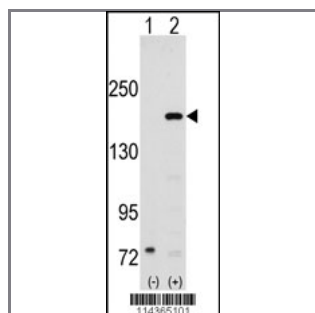
SRC1 Antibody (N-term)

Purified Rabbit Polyclonal Antibody (Pab)

Catalog #	Applications:	Reactivity:	Accessions:
AP7570a	WB, E	H	Q15788

Concentration:	Size:	Isotype:	Clone Name:
0.25 mg/ml	0.1 mg	Rabbit Ig	RB14365

Application Data: **Calculated MW: 156757 Da**



Western blot analysis of SRC1 (arrow) using rabbit polyclonal SRC1 Antibody (N-term) (Cat.#AP7570a). 293 cell lysates (2 ug/lane) either nontransfected (Lane 1) or transiently transfected with the SRC1 gene (Lane 2) (Origene Technologies).

Gene ID:	Gene Symbol:
8648	NCOA1

Other Names:

Nuclear receptor coactivator 1; NCoA-1; Steroid receptor coactivator 1; SRC-1; RIP160; Protein Hin-2; Renal carcinoma antigen NY-REN-52; NCOA1; SRC1

Target/Specificity:

This SRC1 antibody is generated from rabbits immunized with a KLH conjugated synthetic peptide between 193~222 amino acids from the N-terminal region of human SRC1.

Application Notes:

The suggested dilution is:

ELISA 1:1,000

Western blotting 1:50~100

Format:

Purified polyclonal antibody supplied in PBS with 0.09% (W/V) sodium azide. This antibody is prepared by Saturated Ammonium Sulfate (SAS) precipitation followed by dialysis against PBS.

Storage:

Maintain refrigerated at 2-8°C for up to 6 months. For long term storage store at -20°C in small aliquots to prevent freeze-thaw cycles.

Precautions:

SRC1 Antibody (N-term) is for research use only and not for use in diagnostic or therapeutic procedures.
