

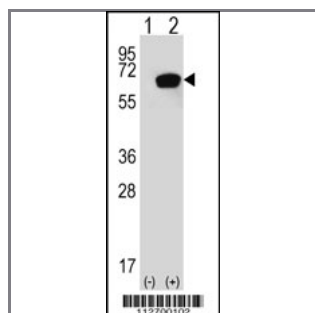
HSPA1A/HSPA1B Antibody (Y41)

Peptide Affinity Purified Rabbit Polyclonal Antibody (Pab)

Catalog #	Applications:	Reactivity:	Accessions:
AP7574a	WB, E	H	P08107
Concentration:	Size:	Isotype:	Clone Name:
0.25 mg/ml	0.1 mg	Rabbit Ig	RB12700

Application Data:

Calculated MW: 70052 Da



Western blot analysis of HSPA1A (arrow) using rabbit polyclonal HSPA1A Antibody (S41) (Cat#AP7574a). 293 cell lysates (2 ug/lane) either nontransfected (Lane 1) or transiently transfected with the HSPA1A gene (Lane 2) (Origene Technologies).

Gene ID:	Gene Symbol:
3304	HSPA1A; HSPA1B

Other Names:

Heat shock 70 kDa protein 1; HSP70.1; HSP70-1/HSP70-2

Target/Specificity:

This HSPA1A/HSPA1B antibody is generated from rabbits immunized with a KLH conjugated synthetic peptide corresponding to amino acid residues surrounding Y41 of human HSPA1A.

Application Notes:

The suggested dilution is:

ELISA 1:1,000

Western blotting 1:50~100

Format:

Purified polyclonal antibody supplied in PBS with 0.09% (W/V) sodium azide. This antibody is purified through a protein A column, followed by peptide affinity purification.

Storage:

Maintain refrigerated at 2-8°C for up to 6 months. For long term storage store at -20°C in small

aliquots to prevent freeze-thaw cycles.

Precautions:

HSPA1A/HSPA1B Antibody (Y41) is for research use only and not for use in diagnostic or therapeutic procedures.
