

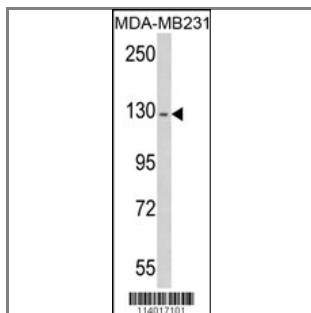
## RASGRF1 Antibody (S929)

Peptide Affinity Purified Rabbit Polyclonal Antibody (Pab)

<b>Catalog #</b>	<b>Applications:</b>	<b>Reactivity:</b>	<b>Accessions:</b>
AP7582b	WB, IHC, E	H	<a href="#">Q13972</a>
<b>Concentration:</b>	<b>Size:</b>	<b>Isotype:</b>	<b>Clone Name:</b>
0.25 mg/ml	0.1 mg	Rabbit Ig	RB14017

### Application Data:

**Calculated MW: 145383 Da**



Western blot analysis of RASGRF1-pS929 (Cat. #AP7582b) in MDA-MB231 cell line lysates (35ug/lane). RASGRF1 (arrow) was detected using the purified Pab.



Formalin-fixed and paraffin-embedded human brain tissue reacted with RASGRF1 Antibody (S929) (Cat.#AP7582b), which was peroxidase-conjugated to the secondary antibody, followed by DAB staining. This data demonstrates the use of this antibody for immunohistochemistry; clinical relevance has not been evaluated.

<b>Gene ID:</b>	<b>Gene Symbol:</b>
<a href="#">5923</a>	RASGRF1

### Other Names:

Apoptosis-stimulating of p53 protein 1; Protein phosphatase 1 regulatory subunit 13B; PPP1R13B; ASPP1; KIAA0771

### Target/Specificity:

This RASGRF1 antibody is generated from rabbits immunized with a KLH conjugated synthetic peptide corresponding to amino acid residues surrounding S929 of human RASGRF1.

### Application Notes:

The suggested dilution is:

ELISA 1:1,000  
Western blot 1:50~100  
Immunohistochemistry 1:10~50

---

**Format:**

Purified polyclonal antibody supplied in PBS with 0.09% (W/V) sodium azide. This antibody is purified through a protein A column, followed by peptide affinity purification.

---

**Storage:**

Maintain refrigerated at 2-8°C for up to 6 months. For long term storage store at -20°C in small aliquots to prevent freeze-thaw cycles.

---

**Precautions:**

RASGRF1 Antibody (S929) is for research use only and not for use in diagnostic or therapeutic procedures.

---