

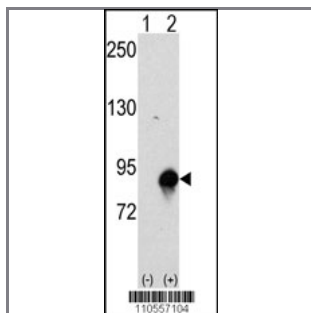
Cullin 4A (CUL4A) Antibody (N-term)

Purified Rabbit Polyclonal Antibody (Pab)

Catalog #	Applications:	Reactivity:	Accessions:
AP7590a	WB, E	H	Q13619

Concentration:	Size:	Isotype:	Clone Name:
0.25 mg/ml	0.1 mg	Rabbit Ig	RB10557

Application Data: **Calculated MW: 87680 Da**



Western blot analysis of CUL4a (arrow) using rabbit polyclonal CUL4a Antibody (Human N-term) (Cat.#AP7590a).293 cell lysates (2 ug/lane) either nontransfected (Lane 1) or transiently transfected with the CUL4a gene (Lane 2) (Origene Technologies).

Gene ID:	Gene Symbol:
8451	CUL4A

Other Names:

Cullin-4A; CUL-4A; CUL4A

Target/Specificity:

This Cullin 4A (CUL4A) antibody is generated from rabbits immunized with a KLH conjugated synthetic peptide between 9~39 amino acids from the N-terminal region of human CUL4a.

Application Notes:

The suggested dilution is:

ELISA 1:1,000

Western blotting 1:50~100

Format:

Purified polyclonal antibody supplied in PBS with 0.09% (W/V) sodium azide. This antibody is prepared by Saturated Ammonium Sulfate (SAS) precipitation followed by dialysis against PBS.

Storage:

Maintain refrigerated at 2-8°C for up to 6 months. For long term storage store at -20°C in

small aliquots to prevent freeze-thaw cycles.

Precautions:

Cullin 4A (CUL4A) Antibody (N-term) is for research use only and not for use in diagnostic or therapeutic procedures.
