

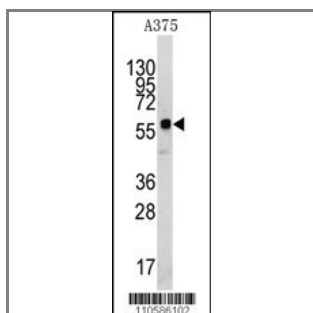
KREMEN1 Antibody (N-term)

Purified Rabbit Polyclonal Antibody (Pab)

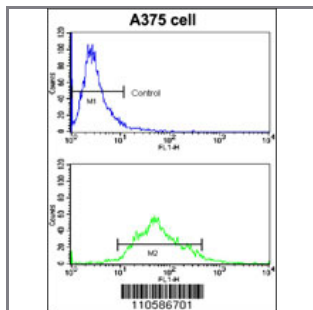
Catalog #	Applications:	Reactivity:	Accessions:
AP7594a	WB, FC, E	H	Q96MU8
Concentration:	Size:	Isotype:	Clone Name:
0.25 mg/ml	0.1 mg	Rabbit Ig	RB10586

Application Data:

Calculated MW: 51744 Da



Western blot analysis of anti-KREMEN1 Antibody (N-term) (Cat.#AP7594a) in A375 cell line lysates (35ug/lane).KREMEN1(arrow) was detected using the purified Pab (1:60dilution).



Flow cytometric analysis of A375 cells using KREMEN1 Antibody (N-term) (bottom histogram) compared to a negative control cell (top histogram). FITC-conjugated goat-anti-rabbit secondary antibodies were used for the analysis.

Gene ID:	Gene Symbol:
83999	KREMEN1

Other Names:

Kremen protein 1 [Precursor]; Kringle-containing protein marking the eye and the nose; Kringle domain-containing transmembrane protein 1; Dickkopf receptor; KREMEN1; KREMEN; KRM1

Target/Specificity:

This KREMEN1 antibody is generated from rabbits immunized with a KLH conjugated synthetic peptide between 60~90 amino acids from the N-terminal region of human KREMEN1.

Application Notes:

The suggested dilution is:

ELISA 1:1,000
Western blotting 1:50~100
Flow cytometric 1:10~50

Format:

Purified polyclonal antibody supplied in PBS with 0.09% (W/V) sodium azide. This antibody is prepared by Saturated Ammonium Sulfate (SAS) precipitation followed by dialysis against PBS.

Storage:

Maintain refrigerated at 2-8°C for up to 6 months. For long term storage store at -20°C in small aliquots to prevent freeze-thaw cycles.

Precautions:

KREMEN1 Antibody (N-term) is for research use only and not for use in diagnostic or therapeutic procedures.
