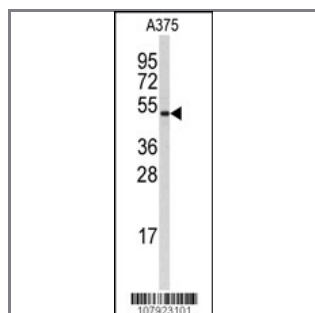


Cyclin B1 Antibody (S126)

Peptide Affinity Purified Rabbit Polyclonal Antibody (Pab)

Catalog #	Applications:	Reactivity:	Accessions:
AP7598b	WB, E	H, M	P14635
Concentration:	Size:	Isotype:	Clone Name:
0.25 mg/ml	0.1 mg	Rabbit Ig	RB07923

Application Data: **Calculated MW: 48337 Da**



Western blot analysis of anti-Cyclin B1 Antibody (S126) (Cat#AP7598b) in A375 cell line lysates (35ug/lane). Cyclin B1 (arrow) was detected using the purified Pab.

Gene ID: [891](#)
Gene Symbol: CCNB1

Other Names:

G2/mitotic-specific cyclin-B1; CCNB1; CCNB

Target/Specificity:

This Cyclin B1 antibody is generated from rabbits immunized with a KLH conjugated synthetic peptide corresponding to amino acid residues surrounding S126 of human CCNB1.

Application Notes:

The suggested dilution is:

ELISA 1:1,000

Western blotting 1:50~100

Format:

Purified polyclonal antibody supplied in PBS with 0.09% (W/V) sodium azide. This antibody is purified through a protein A column, followed by peptide affinity purification.

Storage:

Maintain refrigerated at 2-8°C for up to 6 months. For long term storage store at -20°C in

small aliquots to prevent freeze-thaw cycles.

Precautions:

Cyclin B1 Antibody (S126) is for research use only and not for use in diagnostic or therapeutic procedures.
