

AXL Antibody (N-term)

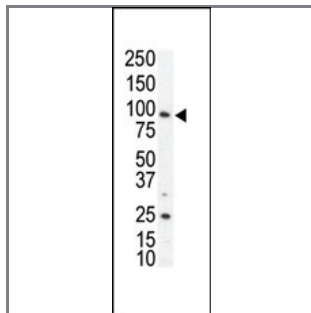
Purified Rabbit Polyclonal Antibody (Pab)

Catalog #	Applications:	Reactivity:	Accessions:
AP7602a	WB, IHC, FC, E	H	P30530

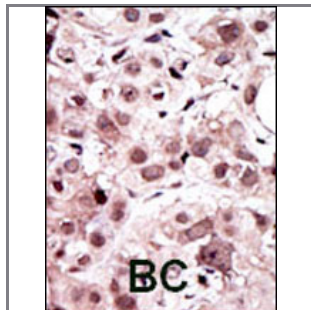
Concentration:	Size:	Isotype:	Clone Name:
0.25 mg/ml	0.1 mg	Rabbit Ig	RB1481

Application Data:

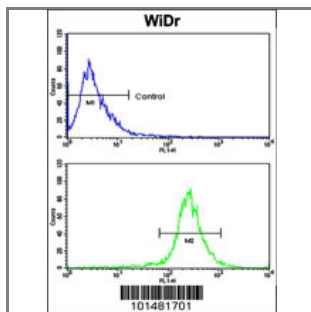
Calculated MW: 97374 Da



Western blot analysis of anti-AXL N-term Pab (Cat. #AP7602a) in SKBR3 cell lysate. AXL (arrow) was detected using purified Pab. Secondary HRP-anti-rabbit was used for signal visualization with chemiluminescence.



Formalin-fixed and paraffin-embedded human cancer tissue reacted with the primary antibody, which was peroxidase-conjugated to the secondary antibody, followed by AEC staining. This data demonstrates the use of this antibody for immunohistochemistry; clinical relevance has not been evaluated. BC = breast carcinoma; HC = hepatocarcinoma.



Flow cytometric analysis of WiDr cells using AXL Antibody (N-term) (bottom histogram) compared to a negative control cell (top histogram). FITC-conjugated goat-anti-rabbit secondary antibodies were used for the analysis.

Gene ID:	Gene Symbol:
558	AXL

Other Names:

"Tyrosine-protein kinase receptor UFO precursor, AXL oncogene"

Target/Specificity:

This AXL antibody is generated from rabbits immunized with a KLH conjugated synthetic peptide between 14~44 amino acids from the N-terminal region of human AXL.

Application Notes:

The suggested dilution is:

ELISA 1:1,000

Western blotting 1:100~500

Immunohistochemistry 1:50~100

Flow cytometric 1:10~50

Format:

Purified polyclonal antibody supplied in PBS with 0.09% (W/V) sodium azide. This antibody is purified through a protein G column, eluted with high and low pH buffers and neutralized immediately, followed by dialysis against PBS.

Storage:

Maintain refrigerated at 2-8°C for up to 6 months. For long term storage store at -20°C in small aliquots to prevent freeze-thaw cycles.

Precautions:

AXL Antibody (N-term) is for research use only and not for use in diagnostic or therapeutic procedures.
