

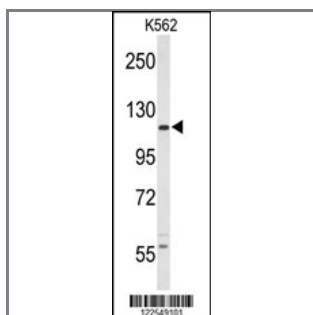
CSF1R Antibody

Peptide Affinity Purified Rabbit Polyclonal Antibody (Pab)

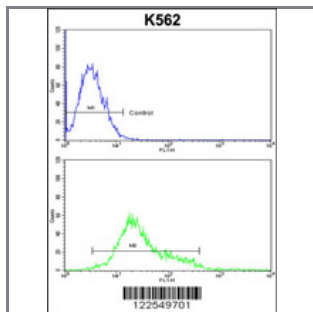
Catalog #	Applications:	Reactivity:	Accessions:
AP7604d	WB, FC, E	H	P07333

Concentration:	Size:	Isotype:	Clone Name:
0.25 mg/ml	0.1 mg	Rabbit Ig	RB22549

Application Data: Calculated MW: 107984 Da



Western blot analysis of CSF1R Antibody (Cat. #AP7604d) in K562 cell line lysates (35ug/lane). CSF1R (arrow) was detected using the purified Pab.



CSF1R Antibody (Cat. #AP7604d) flow cytometric analysis of k562 cells (bottom histogram) compared to a negative control cell (top histogram). FITC-conjugated goat-anti-rabbit secondary antibodies were used for the analysis.

Gene ID:	Gene Symbol:
1436	CSF1R

Other Names:

CD_antigen=CD115; Flags: Precursor; Proto-oncogene c-Fms; Macrophage colony-stimulating factor 1 receptor, CSF-1-R; FMS, CSF1R

Target/Specificity:

This CSF1R antibody is generated from rabbits immunized with CSF1R recombinant protein.

Application Notes:

The suggested dilution is:
ELISA 1:1,000

Western blotting 1:100~500

Flow cytometric 1:10~50

Format:

Purified polyclonal antibody supplied in PBS with 0.09% (W/V) sodium azide. This antibody is purified through a protein A column, followed by protein affinity purification.

Storage:

Maintain refrigerated at 2-8°C for up to 6 months. For long term storage store at -20°C in small aliquots to prevent freeze-thaw cycles.

Precautions:

CSF1R Antibody is for research use only and not for use in diagnostic or therapeutic procedures.
