

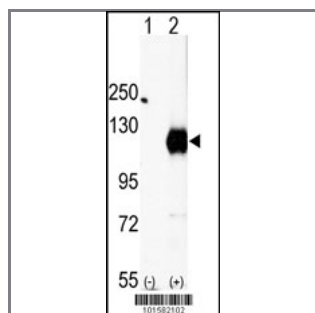
EphA2 Antibody (C-term)

Purified Rabbit Polyclonal Antibody (Pab)

Catalog #	Applications:	Reactivity:	Accessions:
AP7607b	WB, E	H, M, Ha	P29317
Concentration:	Size:	Isotype:	Clone Name:
0.25 mg/ml	0.1 mg	Rabbit Ig	RB1582

Application Data:

Calculated MW: 108254 Da



Western blot analysis of EphA2 (arrow) using rabbit polyclonal EphA2 Antibody (C-term) (Cat.#AP7607b).293 cell lysates (2 ug/lane) either nontransfected (Lane 1) or transiently transfected with the EphA2 gene (Lane 2) (Origene Technologies).

Gene ID:	Gene Symbol:
1969	EPHA2

Other Names:

Ephrin type-A receptor 2; Tyrosine-protein kinase receptor ECK; Epithelial cell kinase

Target/Specificity:

This EphA2 antibody is generated from rabbits immunized with a KLH conjugated synthetic peptide between 927~957 amino acids from the C-terminal region of human EphA2.

Application Notes:

The suggested dilution will be:

ELISA 1:1,000

Western blotting 1:100~500

Flow cytometry

Format:

Purified polyclonal antibody supplied in PBS with 0.09% (W/V) sodium azide. This antibody is purified through a protein G column, eluted with high and low pH buffers and neutralized immediately, followed by dialysis against PBS.

Storage:

Maintain refrigerated at 2-8°C for up to 6 months. For long term storage store at -20°C in small aliquots to prevent freeze-thaw cycles.

Precautions:

EphA2 Antibody (C-term) is for research use only and not for use in diagnostic or therapeutic procedures.
