

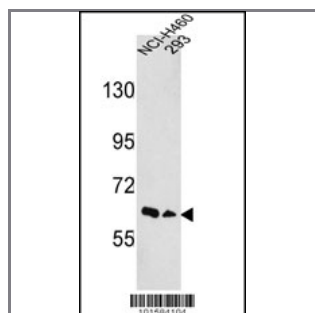
## EphA3 Antibody (N-term)

### Purified Rabbit Polyclonal Antibody (Pab)

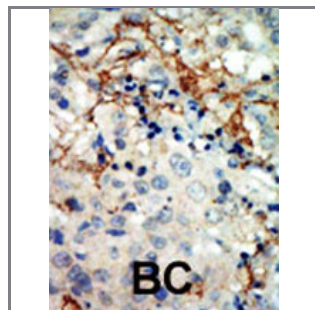
<b>Catalog #</b>	<b>Applications:</b>	<b>Reactivity:</b>	<b>Accessions:</b>
AP7608a	WB, IHC, E	H	<a href="#">P29320</a>
<b>Concentration:</b>	<b>Size:</b>	<b>Isotype:</b>	<b>Clone Name:</b>
0.25 mg/ml	0.1 mg	Rabbit Ig	RB01584

#### Application Data:

**Calculated MW: 60946 Da**



Western blot analysis of hEPhA3-D130 (Cat. #AP7608a) in NCI-H460,293 cell line lysates (35ug/lane). EPHA3 (arrow) was detected using the purified Pab.



Formalin-fixed and paraffin-embedded human cancer tissue reacted with the primary antibody, which was peroxidase-conjugated to the secondary antibody, followed by AEC staining. This data demonstrates the use of this antibody for immunohistochemistry; clinical relevance has not been evaluated. BC = breast carcinoma; HC = hepatocarcinoma.

<b>Gene ID:</b>	<b>Gene Symbol:</b>
<a href="#">2042</a>	EPHA3

#### Other Names:

"Tyrosine-protein kinase receptor ETK1, HEK"

#### Target/Specificity:

This EphA3 antibody is generated from rabbits immunized with a KLH conjugated synthetic peptide between 122~152 amino acids from the N-terminal region of human EphA3.

#### Application Notes:

The suggested dilution is:  
ELISA 1:1,000

Western Blot 1:100~500  
Immunohistochemistry 1:50~100

---

**Format:**

Purified polyclonal antibody supplied in PBS with 0.09% (W/V) sodium azide. This antibody is purified through a protein G column, eluted with high and low pH buffers and neutralized immediately, followed by dialysis against PBS.

---

**Storage:**

Maintain refrigerated at 2-8°C for up to 6 months. For long term storage store at -20°C in small aliquots to prevent freeze-thaw cycles.

---

**Precautions:**

EphA3 Antibody (N-term) is for research use only and not for use in diagnostic or therapeutic procedures.

---