

EphA4 Antibody (N-term)

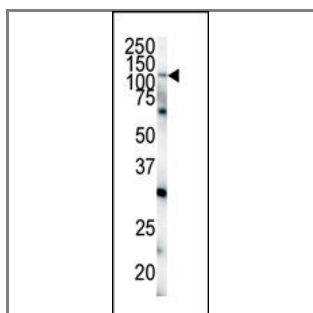
Purified Rabbit Polyclonal Antibody (Pab)

Catalog #	Applications:	Reactivity:	Accessions:
AP7609a	WB, IHC, IF, FC, E	H	P54764

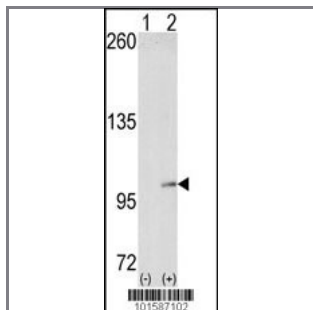
Concentration:	Size:	Isotype:	Clone Name:
0.25 mg/ml	0.1 mg	Rabbit Ig	RB1587

Application Data:

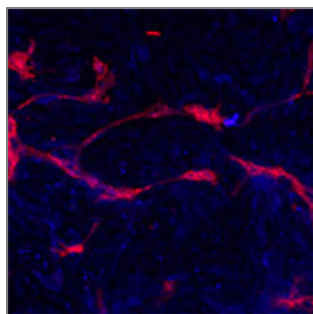
Calculated MW: 109859 Da



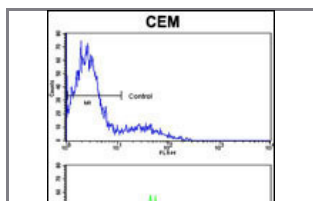
Western blot analysis of anti-EphA4 N-term Pab (Cat. #AP7609a) in HeLa cell lysate. EphA4 (arrow) was detected using purified Pab. Secondary HRP-anti-rabbit was used for signal visualization with chemiluminescence.



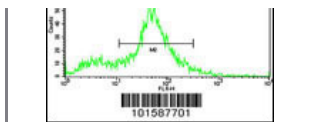
Western blot analysis of EphA4 (arrow) using EphA4 Antibody (N-term) (Cat.#AP7609a). 293 cell lysates (2 ug/lane) either nontransfected (Lane 1) or transiently transfected with the EphA4 gene (Lane 2) (Origene Technologies).



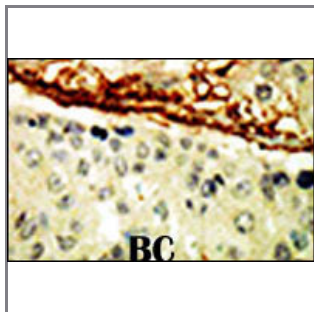
Methanol/Acetone fixed human stem cell is used in IF to detect Eph4A (blue) and endothelial Lectin(red). Data kindly provided by Dr. Weis from Cheresch Lab, UCSD.



Flow cytometric analysis of CEM cells using EphA4 Antibody (N-term) (bottom histogram) compared to a negative control cell (top histogram). FITC-conjugated goat-anti-rabbit secondary antibodies were used for the



analysis.



Formalin-fixed and paraffin-embedded human cancer tissue reacted with the primary antibody, which was peroxidase-conjugated to the secondary antibody, followed by DAB staining. This data demonstrates the use of this antibody for immunohistochemistry; clinical relevance has not been evaluated. BC = breast carcinoma; HC = hepatocarcinoma.

Gene ID:

2043

Gene Symbol:

EPHA4

Other Names:

Ephrin type-A receptor 4 ; Tyrosine-protein kinase receptor SEK; Receptor protein-tyrosine kinase HEK8

Target/Specificity:

This EphA4 antibody is generated from rabbits immunized with a KLH conjugated synthetic peptide between 48~77 amino acids from the N-terminal region of human EphA4.

Application Notes:

The suggested dilution is:

ELISA 1:1,000

Western blotting 1:100~500

Immunohistochemistry 1:50~100

Immunofluorescence 1:100

Format:

Purified polyclonal antibody supplied in PBS with 0.09% (W/V) sodium azide. This antibody is purified through a protein G column, eluted with high and low pH buffers and neutralized immediately, followed by dialysis against PBS.

Storage:

Maintain refrigerated at 2-8°C for up to 6 months. For long term storage store at -20°C in small aliquots to prevent freeze-thaw cycles.

Precautions:

EphA4 Antibody (N-term) is for research use only and not for use in diagnostic or therapeutic procedures.
