

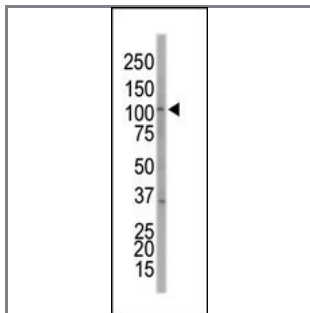
## EphA7 Antibody (C-term)

### Purified Rabbit Polyclonal Antibody (Pab)

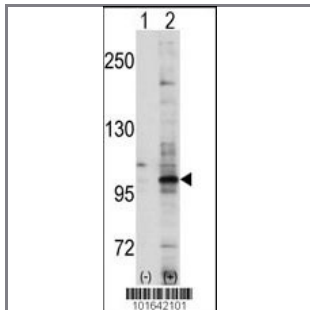
Catalog #	Applications:	Reactivity:	Accessions:
AP7612b	WB, IHC, E	H	<a href="#">Q15375</a>
Concentration:	Size:	Isotype:	Clone Name:
0.25 mg/ml	0.1 mg	Rabbit Ig	RB1641/RB1642

#### Application Data:

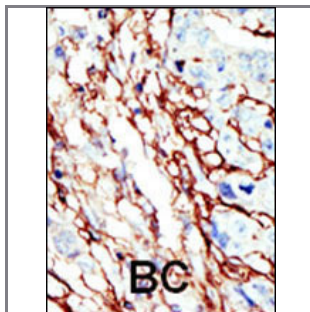
**Calculated MW: 112096 Da**



Western blot analysis of anti-EphA7 Pab (Cat. #AP7612b) in NCI-H460 cell lysate. EphA7 (arrow) was detected using purified Pab. Secondary HRP-anti-rabbit was used for signal visualization with chemiluminescence.



Western blot analysis of EPHA7 (arrow) using EphA7 Antibody (C-term) (Cat.#AP7612b). 293 cell lysates (2 ug/lane) either nontransfected (Lane 1) or transiently transfected with the EPHA7 gene (Lane 2) (Origene Technologies).



Formalin-fixed and paraffin-embedded human cancer tissue reacted with the primary antibody, which was peroxidase-conjugated to the secondary antibody, followed by AEC staining. This data demonstrates the use of this antibody for immunohistochemistry; clinical relevance has not been evaluated. BC = breast carcinoma; HC = hepatocarcinoma.

Gene ID:	Gene Symbol:
<a href="#">2045</a>	EPHA7

#### Other Names:

Ephrin type-A receptor 7; Tyrosine-protein kinase receptor EHK-3; Eph-homology kinase-3; Receptor protein-tyrosine kinase HEK11

---

**Target/Specificity:**

This EphA7 antibody is generated from rabbits immunized with a KLH conjugated synthetic peptide between 904~933 amino acids from the C-terminal region of human EphA7.

---

**Application Notes:**

The suggested dilution is:

ELISA 1:1,000

Western blotting 1:100~500

Immunohistochemistry 1:50~100

---

**Format:**

Purified polyclonal antibody supplied in PBS with 0.09% (W/V) sodium azide. This antibody is purified through a protein G column, eluted with high and low pH buffers and neutralized immediately, followed by dialysis against PBS.

---

**Storage:**

Maintain refrigerated at 2-8°C for up to 6 months. For long term storage store at -20°C in small aliquots to prevent freeze-thaw cycles.

---

**Precautions:**

EphA7 Antibody (C-term) is for research use only and not for use in diagnostic or therapeutic procedures.

---