

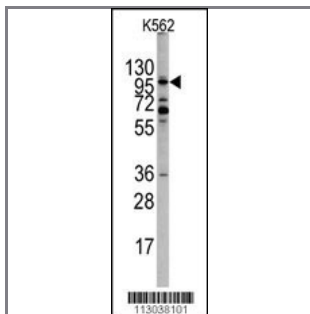
## EPHA10 Antibody (N-term)

### Purified Rabbit Polyclonal Antibody (Pab)

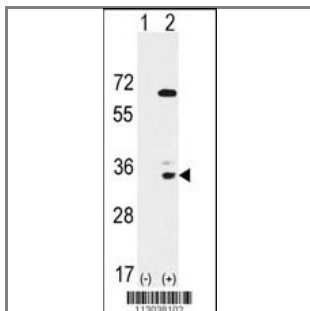
Catalog #	Applications:	Reactivity:	Accessions:
AP7614a	WB, IHC, E	H	<a href="#">Q5JZY3</a>
Concentration:	Size:	Isotype:	Clone Name:
0.25 mg/ml	0.1 mg	Rabbit Ig	RB13038

#### Application Data:

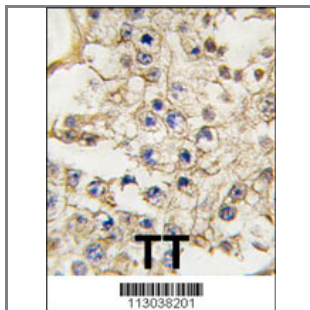
**Calculated MW: 97,205 Da .Isoform 3; Protein expressed in multiple isoforms; 32,120 Da**



Western blot analysis of EPHA10 Antibody (N-term) (Cat.#AP7614a) in K562 cell line lysates (35ug/lane). EPHA10 (arrow) was detected using the purified Pab (1:60 dilution).



Western blot analysis of EPHA10 (arrow) using rabbit polyclonal EPHA10 Antibody (N-term) (Cat. #AP7614a). 293 cell lysates (2 ug/lane) either nontransfected (Lane 1) or transiently transfected with the EPHA10 gene (Lane 2) (Origene Technologies).(2ug/ml)



Formalin-fixed and paraffin-embedded human testis tissue reacted with EPHA10 antibody (N-term), which was peroxidase-conjugated to the secondary antibody, followed by DAB staining. This data demonstrates the use of this antibody for immunohistochemistry; clinical relevance has not been evaluated.

Gene ID:	Gene Symbol:
<a href="#">284656</a>	EPHA10

#### Other Names:

**Target/Specificity:**

This EPHA10 antibody is generated from rabbits immunized with a KLH conjugated synthetic peptide between 157~186 amino acids from the N-terminal region of human EPHA10.

---

**Application Notes:**

The suggested dilution is:

ELISA 1:1,000

Western blotting 1:50~100

Immunohistochemistry 1:10~50

---

**Format:**

Purified rabbit polyclonal antibody supplied in PBS with 0.09% (W/V) sodium azide. This antibody is purified through a protein A column, eluted with high and low pH buffers and neutralized immediately, followed by dialysis against PBS.

---

**Storage:**

Maintain refrigerated at 2-8°C for up to 6 months. For long term storage store at -20°C in small aliquots to prevent freeze-thaw cycles.

---

**Precautions:**

EPHA10 Antibody (N-term) is for research use only and not for use in diagnostic or therapeutic procedures.

---