

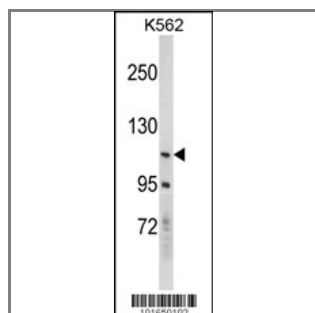
EphB2 Antibody (N-term)

Purified Rabbit Polyclonal Antibody (Pab)

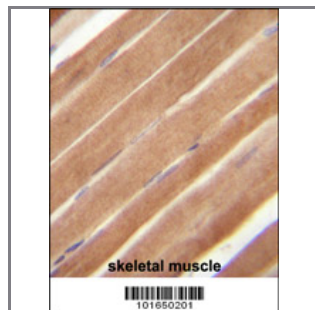
Catalog #	Applications:	Reactivity:	Accessions:
AP7623a	WB, IHC, E	H, M	P29323
Concentration:	Size:	Isotype:	Clone Name:
0.25 mg/ml	0.1 mg	Rabbit Ig	RB1650

Application Data:

Calculated MW: 117506 Da



Western blot analysis of hEPHB2-A118 (Cat. #AP7623a) in K562 cell line lysates (35ug/lane). EPHB2 (arrow) was detected using the purified Pab.



EphB2 Antibody (N-term)(Cat. #AP7623A)immunohistochemistry analysis in formalin fixed and paraffin embedded human skeletal muscle followed by peroxidase conjugation of the secondary antibody and DAB staining.This data demonstrates the use of EphB2 Antibody (N-term) for immunohistochemistry. Clinical relevance has not been evaluated.

Gene ID:	Gene Symbol:
2048	EPHB2

Other Names:

Ephrin type-B receptor 2; Tyrosine-protein kinase receptor EPH-3; DRT; Receptor protein-tyrosine kinase HEK5; ERK

Target/Specificity:

This EphB2 antibody is generated from rabbits immunized with a KLH conjugated synthetic peptide between 111~140 amino acids from the N-terminal region of human EphB2.

Application Notes:

The suggested dilution is:

ELISA 1:1,000
Western blotting 1:100~500
Immunohistochemistry 1:50~100

Format:

Purified polyclonal antibody supplied in PBS with 0.09% (W/V) sodium azide. This antibody is purified through a protein G column, eluted with high and low pH buffers and neutralized immediately, followed by dialysis against PBS.

Storage:

Maintain refrigerated at 2-8°C for up to 6 months. For long term storage store at -20°C in small aliquots to prevent freeze-thaw cycles.

Precautions:

EphB2 Antibody (N-term) is for research use only and not for use in diagnostic or therapeutic procedures.
