

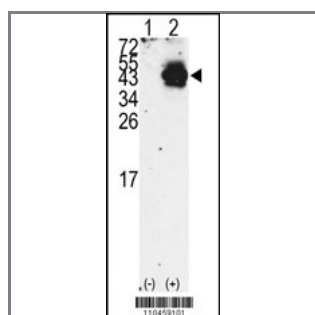
PDX1 Antibody (N-term)

Peptide Affinity Purified Rabbit Polyclonal Antibody (Pab)

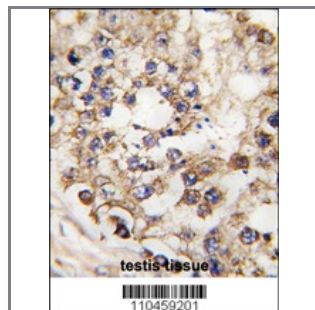
Catalog #	Applications:	Reactivity:	Accessions:
AP7740a	WB, IHC, E	H	P52945
Concentration:	Size:	Isotype:	Clone Name:
0.25 mg/ml	0.1 mg	Rabbit Ig	RB10459

Application Data:

Calculated MW: 30771 Da



Western blot analysis of PDX1 (arrow) using rabbit polyclonal PDX1 Antibody (N-term) (RB10459). 293 cell lysates (2 ug/lane) either nontransfected (Lane 1) or transiently transfected with the PDX1 gene (Lane 2) (Origene Technologies).



Formalin-fixed and paraffin-embedded human testis tissue reacted with PDX1 Antibody (N-term) (Cat.#AP7740a), which was peroxidase-conjugated to the secondary antibody, followed by DAB staining. This data demonstrates the use of this antibody for immunohistochemistry; clinical relevance has not been evaluated.

Gene ID:	Gene Symbol:
3651	PDX1

Other Names:

Pancreas/duodenum homeobox protein 1; PDX-1; Insulin promoter factor 1; IPF-1; Islet/duodenum homeobox-1; IDX-1; Somatostatin-transactivating factor 1; STF-1; Insulin upstream factor 1; IUF-1; Glucose-sensitive factor; GSF; PDX1; IPF1

Target/Specificity:

This PDX1 antibody is generated from rabbits immunized with a KLH conjugated synthetic peptide between 47~77 amino acids from the N-terminal region of human PDX1.

Application Notes:

The suggested dilution is:

ELISA 1:1,000

Western Blot 1:100~500

Immunohistochemistry 1:10~50

Format:

Purified polyclonal antibody supplied in PBS with 0.09% (W/V) sodium azide. This antibody is purified through a protein A column, followed by peptide affinity purification.

Storage:

Maintain refrigerated at 2-8°C for up to 6 months. For long term storage store at -20°C in small aliquots to prevent freeze-thaw cycles.

Precautions:

PDX1 Antibody (N-term) is for research use only and not for use in diagnostic or therapeutic procedures.
