

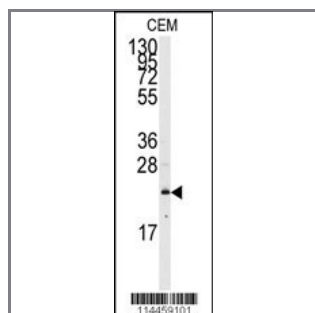
## NRAS Antibody (N-term)

### Purified Rabbit Polyclonal Antibody (Pab)

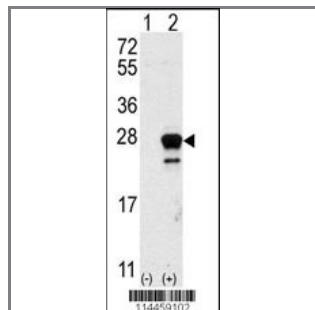
<b>Catalog #</b>	<b>Applications:</b>	<b>Reactivity:</b>	<b>Accessions:</b>
AP7745a	WB, FC, E	H	<a href="#">P01111</a>

<b>Concentration:</b>	<b>Size:</b>	<b>Isotype:</b>	<b>Clone Name:</b>
0.25 mg/ml	0.1 mg	Rabbit Ig	RB14459

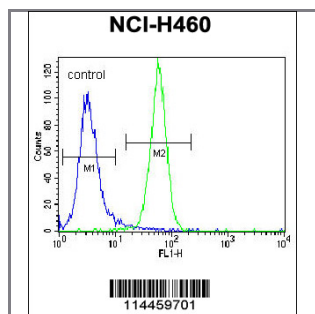
#### Application Data: Calculated MW: 21229 Da



Western blot analysis of anti-NRAS Antibody (N-term)(Cat.#AP7745a) in CEM cell line lysates (35ug/lane). NRAS(arrow) was detected using the purified Pab.



Western blot analysis of NRAS (arrow) using rabbit polyclonal NRAS Antibody (N-term) (Cat.#AP7745a). 293 cell lysates (2 ug/lane) either nontransfected (Lane 1) or transiently transfected with the NRAS gene (Lane 2) (Origene Technologies).



NRAS Antibody (N-term) (Cat. #AP7745a) flow cytometric analysis of NCI-H460 cells (right histogram) compared to a negative control cell (left histogram).FITC-conjugated goat-anti-rabbit secondary antibodies were used for the analysis.

<b>Gene ID:</b>	<b>Gene Symbol:</b>
<a href="#">4893</a>	NRAS

**Other Names:**

GTPase NRas [Precursor]; Transforming protein N-Ras; NRAS; HRAS1

---

**Target/Specificity:**

This NRAS antibody is generated from rabbits immunized with a KLH conjugated synthetic peptide between 79~109 amino acids from the N-terminal region of human NRAS.

---

**Application Notes:**

The suggested dilution is:

ELISA 1:1,000

Western blotting 1:50~100

Flow cytometric 1:10~50

---

**Format:**

Purified polyclonal antibody supplied in PBS with 0.09% (W/V) sodium azide. This antibody is prepared by Saturated Ammonium Sulfate (SAS) precipitation followed by dialysis against PBS.

---

**Storage:**

Maintain refrigerated at 2-8°C for up to 6 months. For long term storage store at -20°C in small aliquots to prevent freeze-thaw cycles.

---

**Precautions:**

NRAS Antibody (N-term) is for research use only and not for use in diagnostic or therapeutic procedures.

---