

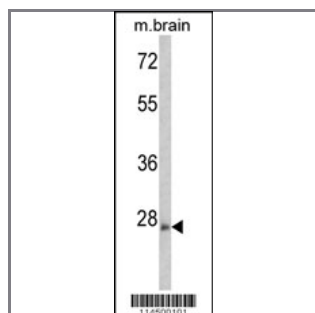
ARHE Antibody (Center)

Purified Rabbit Polyclonal Antibody (Pab)

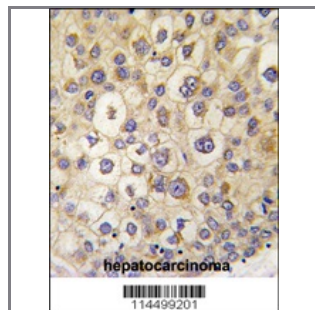
Catalog #	Applications:	Reactivity:	Accessions:
AP7751c	WB, IHC, E	H, M	P61587
Concentration:	Size:	Isotype:	Clone Name:
0.25 mg/ml	0.1 mg	Rabbit Ig	RB14500

Application Data:

Calculated MW: 27368 Da



Western blot analysis of ARHE Antibody (Center)(Cat. 3AP7751c) in mouse brain tissue lysates (35ug/lane). ARHE (arrow) was detected using the purified Pab.



Formalin-fixed and paraffin-embedded human hepatocarcinoma tissue reacted with ARHE antibody (Center) (Cat.#AP7751c), which was peroxidase-conjugated to the secondary antibody, followed by DAB staining. This data demonstrates the use of this antibody for immunohistochemistry; clinical relevance has not been evaluated.

Gene ID:	Gene Symbol:
390	RND3

Other Names:

Rho-related GTP-binding protein RhoE [Precursor]; Rho family GTPase 3; Rnd3; Rho8; MemB protein; RND3; ARHE; RHO8; RHOE

Target/Specificity:

This ARHE antibody is generated from rabbits immunized with a KLH conjugated synthetic peptide between 142~171 amino acids from the Center region of human AEHE.

Application Notes:

The suggested dilution is:

ELISA 1:1,000
Western blot 1:50~100
Immunohistochemistry 1:10~50

Format:

Purified polyclonal antibody supplied in PBS with 0.09% (W/V) sodium azide. This antibody is prepared by Saturated Ammonium Sulfate (SAS) precipitation followed by dialysis against PBS.

Storage:

Maintain refrigerated at 2-8°C for up to 6 months. For long term storage store at -20°C in small aliquots to prevent freeze-thaw cycles.

Precautions:

ARHE Antibody (Center) is for research use only and not for use in diagnostic or therapeutic procedures.
