

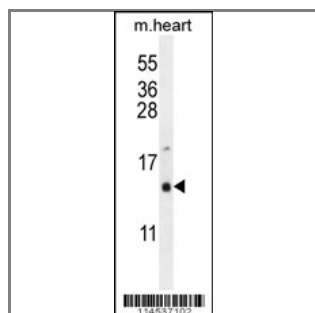
## GNRH1 Antibody (N-term)

### Purified Rabbit Polyclonal Antibody (Pab)

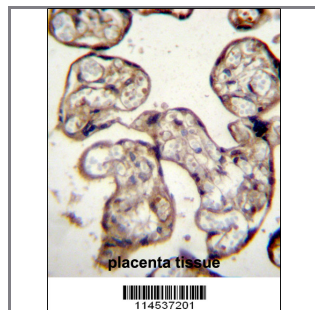
Catalog #	Applications:	Reactivity:	Accessions:
AP7754a	WB, IHC, E	H, M	<a href="#">P01148</a>

Concentration:	Size:	Isotype:	Clone Name:
0.25 mg/ml	0.1 mg	Rabbit Ig	RB14537

#### Application Data: Calculated MW: 10380 Da



GNRH1 Antibody (N-term) (Cat.#AP7754a) western blot analysis in mouse heart tissue lysates (35ug/lane). This demonstrates the GNRH1 antibody detected the GNRH1 protein (arrow).



GNRH1 Antibody (N-term) (Cat. #AP7754a) immunohistochemistry analysis in formalin fixed and paraffin embedded human placenta tissue followed by peroxidase conjugation of the secondary antibody and DAB staining. This data demonstrates the use of GNRH1 Antibody (N-term) for immunohistochemistry. Clinical relevance has not been evaluated.

Gene ID:	Gene Symbol:
<a href="#">2796</a>	GNRH1

#### Other Names:

Progonadoliberein-1 [Precursor]; ogonadoliberein I; Gonadoliberein-1; GnRH-associated peptide 1; GNRH1; GNRH; GRH; LHRH

#### Target/Specificity:

This GNRH1 antibody is generated from rabbits immunized with a KLH conjugated synthetic peptide between 18~47 amino acids from the N-terminal region of human GNRH1.

#### Application Notes:

The suggested dilution is:

ELISA 1:1,000  
Western blotting 1:50~100  
Immunohistochemistry 1:10~50

---

**Format:**

Purified polyclonal antibody supplied in PBS with 0.09% (W/V) sodium azide. This antibody is prepared by Saturated Ammonium Sulfate (SAS) precipitation followed by dialysis against PBS.

---

**Storage:**

Maintain refrigerated at 2-8°C for up to 6 months. For long term storage store at -20°C in small aliquots to prevent freeze-thaw cycles.

---

**Precautions:**

GNRH1 Antibody (N-term) is for research use only and not for use in diagnostic or therapeutic procedures.

---