

FKBP1A Antibody (C-term)

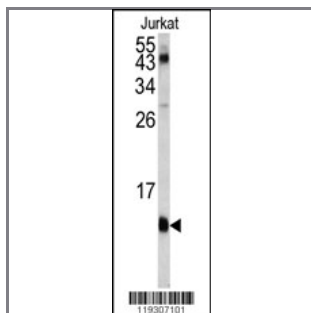
Purified Rabbit Polyclonal Antibody (Pab)

Catalog #	Applications:	Reactivity:	Accessions:
AP7756b	IHC, WB, FC, E	H	P62942

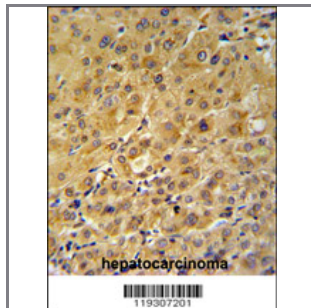
Concentration:	Size:	Isotype:	Clone Name:
0.25 mg/ml	0.1 mg	Rabbit Ig	RB19307

Application Data:

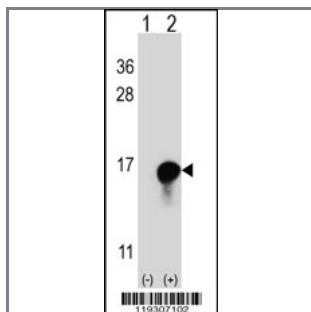
Calculated MW: 11951 Da



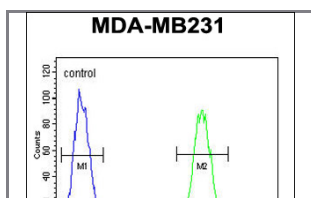
Western blot analysis of FKBP1A antibody (C-term) (Cat.# AP7756b) in Jurkat cell line lysates (35ug/lane). FKBP1A (arrow) was detected using the purified Pab.



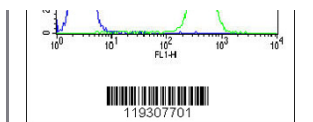
FKBP1A Antibody (C-term) (Cat.# AP7756b) IHC analysis in formalin fixed and paraffin embedded human hepatocarcinoma followed by peroxidase conjugation of the secondary antibody and DAB staining. This data demonstrates the use of the FKBP1A Antibody (C-term) for immunohistochemistry. Clinical relevance has not been evaluated.



Western blot analysis of FKBP1A (arrow) using rabbit polyclonal FKBP1A Antibody (C-term) (Cat. #AP7756b). 293 cell lysates (2 ug/lane) either nontransfected (Lane 1) or transiently transfected (Lane 2) with the FKBP1A gene.



FKBP1A Antibody (C-term) (Cat. #AP7756b) flow cytometric analysis of MDA-MB231 cells (right histogram) compared to a negative control cell (left histogram). FITC-conjugated goat-anti-rabbit secondary antibodies were



used for the analysis.

Gene ID:

2280

Gene Symbol:

FKBP1A

Other Names:

Peptidyl-prolyl cis-trans isomerase FKBP1A; PPlase FKBP1A; EC 5.2.1.8; FK506-binding protein 1A; FKBP-1A; Rotamase; Immunophilin FKBP12; 12 kDa FKBP; FKBP-12; FKBP1A; FKBP1; FKBP12

Target/Specificity:

This FKBP1A antibody is generated from rabbits immunized with a KLH conjugated synthetic peptide between 62~91 amino acids from the C-terminal region of human FKBP1A.

Application Notes:

The suggested dilution is:

ELISA 1:1,000

Western blotting 1:50~100

Immunohistochemistry 1:50~100

Flow cytometric 1:10~50

Format:

Purified polyclonal antibody supplied in PBS with 0.09% (W/V) sodium azide. This antibody is prepared by Saturated Ammonium Sulfate (SAS) precipitation followed by dialysis against PBS.

Storage:

Maintain refrigerated at 2-8°C for up to 6 months. For long term storage store at -20°C in small aliquots to prevent freeze-thaw cycles.

Precautions:

FKBP1A Antibody (C-term) is for research use only and not for use in diagnostic or therapeutic procedures.
