

## HIF1Alpha Antibody (Center)

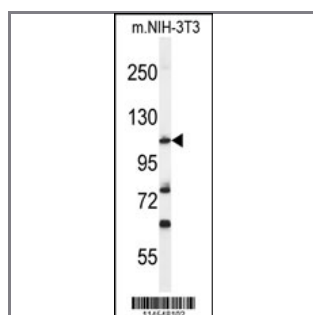
### Purified Rabbit Polyclonal Antibody (Pab)

Catalog #	Applications:	Reactivity:	Accessions:
AP7759c	WB, IF, IHC	H, M	<a href="#">Q16665</a>

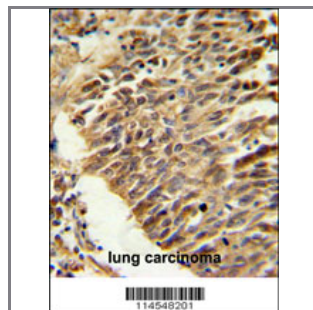
Concentration:	Size:	Isotype:	Clone Name:
0.25 mg/ml	0.1 mg	Rabbit Ig	RB14548

#### Application Data:

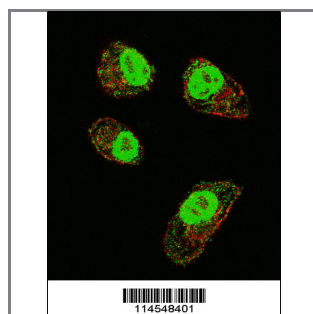
#### Calculated MW: 92670 Da



Western blot analysis of HIF1Alpha Antibody (Center) (Cat. #AP7759c) in mouse NIH-3T3 cell line lysates (35ug/lane). HIF1Alpha (arrow) was detected using the purified Pab.



HIF1Alpha Antibody (Center)(Cat. #AP7759c) IHC analysis in formalin fixed and paraffin embedded lung carcinoma followed by peroxidase conjugation of the secondary antibody and DAB staining. This data demonstrates the use of the HIF1Alpha Antibody (Center) for immunohistochemistry. Clinical relevance has not been evaluated.



Confocal immunofluorescent analysis of HIF1Alpha Antibody (Center)(Cat#AP7759c) with MDA-MB231 cell followed by Alexa Fluor 488-conjugated goat anti-rabbit IgG (green). Actin filaments have been labeled with Alexa Fluor 555 phalloidin (red).

Gene ID:	Gene Symbol:
<a href="#">3091</a>	HIF1A

#### Other Names:

Class E basic helix-loop-helix protein 78, bHLHe78; PAS domain-containing protein 8; Basic-helix-loop-helix-PAS protein MOP1; Member of PAS protein 1; ARNT-interacting protein; Hypoxia-inducible factor 1-alpha, HIF-1-alpha; HIF1-alpha,PASD8, MOP1, BHLHE78, HIF1A

---

**Target/Specificity:**

This HIF1Alpha antibody is generated from rabbits immunized with a KLH conjugated synthetic between amino acids 520-550 selected from the Central region of human HIF1Alpha.

---

**Application Notes:**

The suggested dilution is:

ELISA 1:1,000

Western blotting 1:50~100

Immunohistochemistry 1:50~100

Immunofluorescence 1:10~50

---

**Format:**

Purified polyclonal antibody supplied in PBS with 0.09% (W/V) sodium azide. This antibody is prepared by Saturated Ammonium Sulfate (SAS) precipitation followed by dialysis against PBS.

---

**Storage:**

Maintain refrigerated at 2-8°C for up to 6 months. For long term storage store at -20°C in small aliquots to prevent freeze-thaw cycles.

---

**Precautions:**

HIF1Alpha Antibody (Center) is for research use only and not for use in diagnostic or therapeutic procedures.

---