

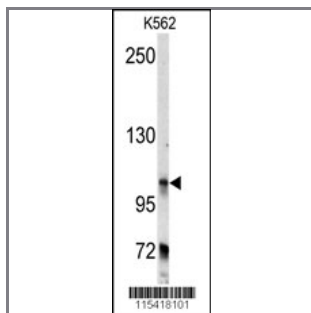
BICD2 Antibody (C-term)

Purified Rabbit Polyclonal Antibody (Pab)

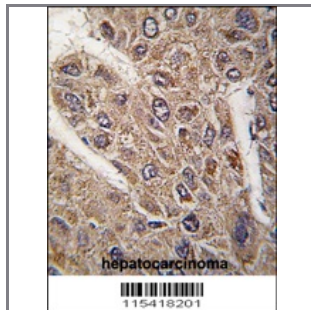
Catalog #	Applications:	Reactivity:	Accessions:
AP7761b	WB, IHC, E	H	Q8TD16

Concentration:	Size:	Isotype:	Clone Name:
0.25 mg/ml	0.1 mg	Rabbit Ig	RB15418

Application Data: Calculated MW: 93533 Da



Western blot analysis of anti-BICD2 Antibody (C-term) (Cat.#AP7761b) in K562 cell line lysates (35ug/lane). BICD2 (arrow) was detected using the purified Pab.



Formalin-fixed and paraffin-embedded human hepatocarcinoma tissue reacted with BICD2 antibody (C-term) (Cat.#AP7761b), which was peroxidase-conjugated to the secondary antibody, followed by DAB staining. This data demonstrates the use of this antibody for immunohistochemistry; clinical relevance has not been evaluated.

Gene ID:	Gene Symbol:
23299	BICD2

Other Names:

Protein bicaudal D homolog 2; Bic-D 2; BICD2; KIAA0699

Target/Specificity:

This BICD2 antibody is generated from rabbits immunized with a KLH conjugated synthetic peptide between 795~824 amino acids from the C-terminal region of human BICD2.

Application Notes:

The suggested dilution is:
ELISA 1:1,000

Western blotting 1:50~100
Immunohistochemistry 1:10~50

Format:

Purified polyclonal antibody supplied in PBS with 0.09% (W/V) sodium azide. This antibody is prepared by Saturated Ammonium Sulfate (SAS) precipitation followed by dialysis against PBS.

Storage:

Maintain refrigerated at 2-8°C for up to 6 months. For long term storage store at -20°C in small aliquots to prevent freeze-thaw cycles.

Precautions:

BICD2 Antibody (C-term) is for research use only and not for use in diagnostic or therapeutic procedures.
