

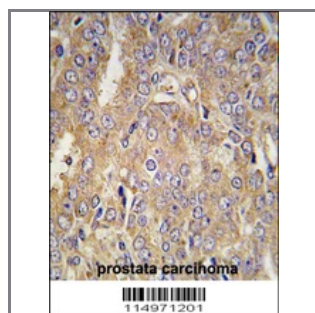
LTBP1 Antibody (C-term)

Purified Rabbit Polyclonal Antibody (Pab)

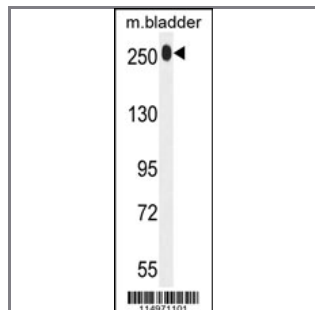
Catalog #	Applications:	Reactivity:	Accessions:
AP7780b	WB, IHC	H, M	Q14766
Concentration:	Size:	Isotype:	Clone Name:
0.25 mg/ml	0.1 mg	Rabbit Ig	RB14971

Application Data:

Calculated MW: 173230 Da



Formalin-fixed and paraffin-embedded human prostate carcinoma tissue reacted with LTBP1 antibody (C-term) (Cat.#AP7780b), which was peroxidase-conjugated to the secondary antibody, followed by DAB staining. This data demonstrates the use of this antibody for immunohistochemistry; clinical relevance has not been evaluated.



LTBP1 Antibody (C-term) (Cat.#AP7780b) western blot analysis in mouse bladder tissue lysates (35ug/lane). This demonstrates the LTBP1 antibody detected the LTBP1 protein (arrow).

Gene ID:	Gene Symbol:
4052	LTBP1

Other Names:

Latent-transforming growth factor beta-binding protein, isoform 1L; LTBP-1; Transforming growth factor beta-1-binding protein 1; TGF-beta1-BP-1; LTBP1

Target/Specificity:

This LTBP1 antibody is generated from rabbits immunized with a KLH conjugated synthetic peptide between 1376~1406 amino acids from the C-terminal region of human LTBP1.

Application Notes:

The suggested dilution is:

ELISA 1:1,000
Western blot 1:50~100
Immunohistochemistry 1:10~50

Format:

Purified polyclonal antibody supplied in PBS with 0.09% (W/V) sodium azide. This antibody is prepared by Saturated Ammonium Sulfate (SAS) precipitation followed by dialysis against PBS.

Storage:

Maintain refrigerated at 2-8°C for up to 6 months. For long term storage store at -20°C in small aliquots to prevent freeze-thaw cycles.

Precautions:

LTBP1 Antibody (C-term) is for research use only and not for use in diagnostic or therapeutic procedures.
