

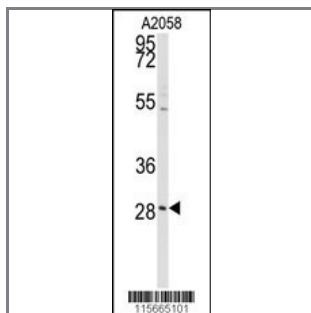
PRKCDBP Antibody (Center)

Purified Rabbit Polyclonal Antibody (Pab)

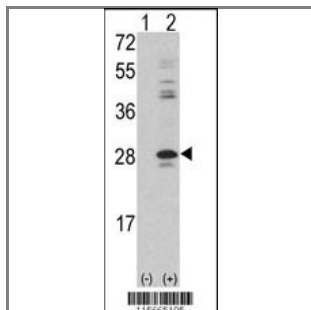
Catalog #	Applications:	Reactivity:	Accessions:
AP7787c	WB, E	H	Q969G5

Concentration:	Size:	Isotype:	Clone Name:
0.25 mg/ml	0.1 mg	Rabbit Ig	RB15665

Application Data: **Calculated MW: 27626 Da**



Western blot analysis of anti-PRKCDBP Antibody (Center) (Cat.#AP7787c) in A2058 cell line lysates (35ug/lane). PRKCDBP (arrow) was detected using the purified Pab.



Western blot analysis of PRKCDBP (arrow) using rabbit polyclonal PRKCDBP Antibody (Center) (Cat. #AP7787c). 293 cell lysates (2 ug/lane) either nontransfected (Lane 1) or transiently transfected with the PRKCDBP gene (Lane 2) (Origene Technologies).

Gene ID:	Gene Symbol:
112464	PRKCDBP

Other Names:

Protein kinase C delta-binding protein; Serum deprivation response factor-related gene product that binds to C-kinase; hSRBC; PRKCDBP; SRBC

Target/Specificity:

This PRKCDBP antibody is generated from rabbits immunized with a KLH conjugated synthetic peptide between 121~151 amino acids from the center region of human PRKCDBP.

Application Notes:

The suggested dilution is:

ELISA 1:1,000
Western blotting 1:50~100

Format:

Purified polyclonal antibody supplied in PBS with 0.09% (W/V) sodium azide. This antibody is prepared by Saturated Ammonium Sulfate (SAS) precipitation followed by dialysis against PBS.

Storage:

Maintain refrigerated at 2-8°C for up to 6 months. For long term storage store at -20°C in small aliquots to prevent freeze-thaw cycles.

Precautions:

PRKCDBP Antibody (Center) is for research use only and not for use in diagnostic or therapeutic procedures.
