

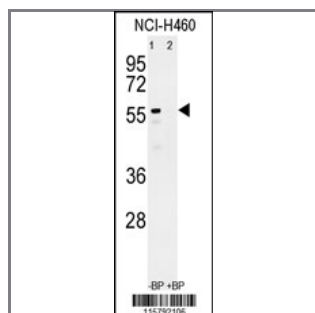
CYP3A4 Antibody (Center)

Purified Rabbit Polyclonal Antibody (Pab)

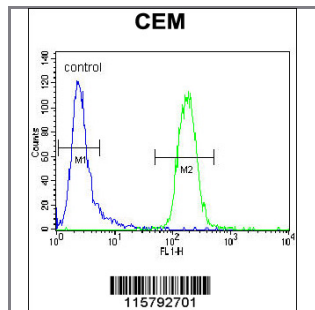
Catalog #	Applications:	Reactivity:	Accessions:
AP7788c	WB, FC, E	H	P08684

Concentration:	Size:	Isotype:	Clone Name:
0.25 mg/ml	0.1 mg	Rabbit Ig	RB15792

Application Data: Calculated MW: 57343 Da



Western blot analysis of CYP3A4 Antibody (Center) (Cat. #AP7788c) in NCI-H460 cell line lysates (35ug/lane). CYP3A4 (arrow) was detected using the purified Pab.



CYP3A4 Antibody (Center) (Cat. #AP7788c) flow cytometric analysis of CEM cells (right histogram) compared to a negative control cell (left histogram). FITC-conjugated goat-anti-rabbit secondary antibodies were used for the analysis.

Gene ID:	Gene Symbol:
1576	CYP3A4

Other Names:

Cytochrome P450 3A4; Quinine 3-monooxygenase; CYP11A4; Nifedipine oxidase; Cytochrome P450 3A3; CYP11A3; HLp; Taurochenodeoxycholate 6-alpha-hydroxylase; NF-25; P450-PCN1

Target/Specificity:

This CYP3A4 antibody is generated from rabbits immunized with a KLH conjugated synthetic peptide between 234~264 amino acids from the center region of human CYP3A4.

Application Notes:

The suggested dilution is:

ELISA 1:1,000
Western blotting 1:50~100
Flow cytometric 1:10~50

Format:

Purified polyclonal antibody supplied in PBS with 0.09% (W/V) sodium azide. This antibody is prepared by Saturated Ammonium Sulfate (SAS) precipitation followed by dialysis against PBS.

Storage:

Maintain refrigerated at 2-8°C for up to 6 months. For long term storage store at -20°C in small aliquots to prevent freeze-thaw cycles.

Precautions:

CYP3A4 Antibody (Center) is for research use only and not for use in diagnostic or therapeutic procedures.
