

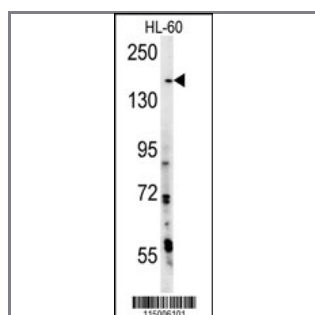
PHLPP2 Antibody (N-term)

Purified Rabbit Polyclonal Antibody (Pab)

Catalog #	Applications:	Reactivity:	Accessions:
AP7799a	WB, E	H	Q6ZVD8
Concentration:	Size:	Isotype:	Clone Name:
0.25 mg/ml	0.1 mg	Rabbit Ig	RB15006

Application Data:

Calculated MW: 146751 Da



PHLPP2 Antibody (N-term) (Cat. #AP7799a) western blot analysis in HL-60 cell line lysates (15ug/lane). This demonstrates the PHLPP2 antibody detected the PHLPP2 protein (arrow).

Gene ID:	Gene Symbol:
23035	PHLPP2

Other Names:

PH domain leucine-rich repeat protein phosphatase-like; PHLPP-like; PHLPP2; PHLPP1; KIAA0931

Target/Specificity:

This PHLPP2 antibody is generated from rabbits immunized with a KLH conjugated synthetic peptide between 11~40 amino acids from the N-term region of human PHLPP2.

Application Notes:

The suggested dilution is:

ELISA 1:1,000

Western blot 1:50~100

Format:

Purified polyclonal antibody supplied in PBS with 0.09% (W/V) sodium azide. This antibody is prepared by Saturated Ammonium Sulfate (SAS) precipitation followed by dialysis against PBS.

Storage:

Maintain refrigerated at 2-8°C for up to 6 months. For long term storage store at -20°C in

small aliquots to prevent freeze-thaw cycles.

Precautions:

PHLPP2 Antibody (N-term) is for research use only and not for use in diagnostic or therapeutic procedures.
