

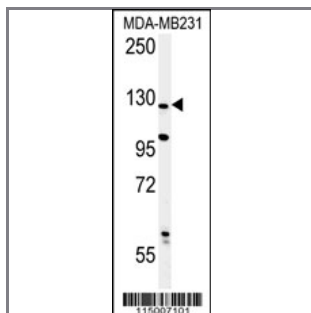
PHLPP2 Antibody (C-term)

Purified Rabbit Polyclonal Antibody (Pab)

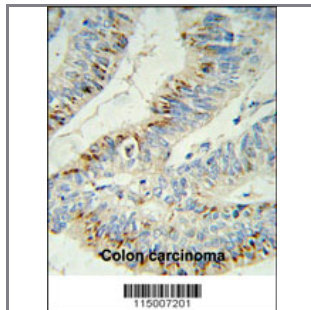
Catalog #	Applications:	Reactivity:	Accessions:
AP7799b	WB, FC, IHC	H	Q6ZVD8

Concentration:	Size:	Isotype:	Clone Name:
0.25 mg/ml	0.1 mg	Rabbit Ig	RB15007

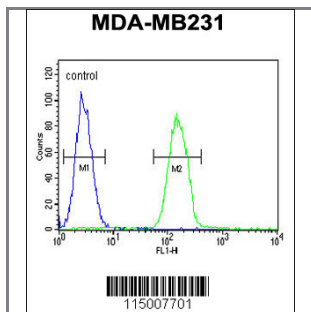
Application Data: **Calculated MW: 146751 Da**



Western blot analysis of PHLPP2 Antibody (C-term) (Cat. #AP7799b) in MDA-MB231 cell line lysates (35ug/lane). PHLPP2 (arrow) was detected using the purified Pab.



PHLPP2 Antibody (C-term) (Cat. #AP7799b) IHC analysis in formalin fixed and paraffin embedded colon carcinoma followed by peroxidase conjugation of the secondary antibody and DAB staining. This data demonstrates the use of the PHLPP2 Antibody (C-term) for immunohistochemistry. Clinical relevance has not been evaluated.



PHLPP2 Antibody (C-term) (Cat. #AP7799b) flow cytometric analysis of MDA-MB231 cells (right histogram) compared to a negative control cell (left histogram). FITC-conjugated goat-anti-rabbit secondary antibodies were used for the analysis.

Gene ID: **Gene Symbol:**

[23035](#)

Other Names:

PH domain leucine-rich repeat protein phosphatase-like; PHLPP-like; PHLPP2; PHLPP1; KIAA0931

Target/Specificity:

This PHLPP2 antibody is generated from rabbits immunized with a KLH conjugated synthetic peptide between 1301-1331 amino acids from the C-terminal region of human PHLPP2.

Application Notes:

The suggested dilution is:

ELISA 1:1,000

Western blotting 1:50~100

Immunohistochemistry 1:50~100

Flow cytometric 1:10~50

Format:

Purified polyclonal antibody supplied in PBS with 0.09% (W/V) sodium azide. This antibody is prepared by Saturated Ammonium Sulfate (SAS) precipitation followed by dialysis against PBS.

Storage:

Maintain refrigerated at 2-8°C for up to 6 months. For long term storage store at -20°C in small aliquots to prevent freeze-thaw cycles.

Precautions:

PHLPP2 Antibody (C-term) is for research use only and not for use in diagnostic or therapeutic procedures.
