

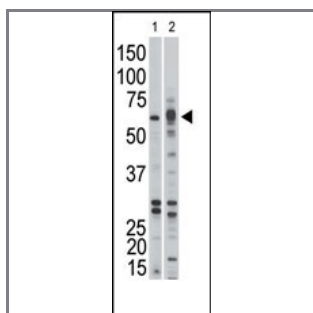
## Activin A Receptor Type IB (ACVR1B) Antibody (Center)

Purified Rabbit Polyclonal Antibody (Pab)

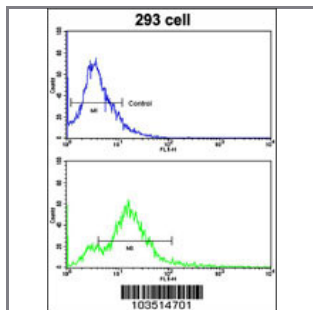
<b>Catalog #</b>	<b>Applications:</b>	<b>Reactivity:</b>	<b>Accessions:</b>
AP7801c	WB, FC, E	H, M	<a href="#">P36896</a>

<b>Concentration:</b>	<b>Size:</b>	<b>Isotype:</b>	<b>Clone Name:</b>
0.25 mg/ml	0.1 mg	Rabbit Ig	RB3514

**Application Data:** **Calculated MW: 56806 Da**



The anti-ACVR1B Pab (Cat. #AP7801c) is used in Western blot to detect ACVR1B in Jurkat (1) and mouse kidney (2) tissue lysates.



Flow cytometric analysis of 293 cells using Activin A Receptor Type IB (ACVR1B) Antibody (Center) (bottom histogram) compared to a negative control cell (top histogram). FITC-conjugated goat-anti-rabbit secondary antibodies were used for the analysis.

<b>Gene ID:</b>	<b>Gene Symbol:</b>
<a href="#">91</a>	ACVR1B

### Other Names:

"SKR2, Activin receptor-like kinase 4, ALK-4, ACTR-IB"

### Target/Specificity:

This ACVR1B antibody is generated from rabbits immunized with a KLH conjugated synthetic peptide between 96~125 amino acids from the center region of human ACVR1B.

### Application Notes:

The suggested dilution will be:  
 ELISA 1:1,000

Western blotting 1:100~500

Flow cytometric 1:10~50

---

**Format:**

Purified polyclonal antibody supplied in PBS with 0.09% (W/V) sodium azide. This antibody is purified through a protein G column, eluted with high and low pH buffers and neutralized immediately, followed by dialysis against PBS.

---

**Storage:**

Maintain refrigerated at 2-8°C for up to 6 months. For long term storage store at -20°C in small aliquots to prevent freeze-thaw cycles.

---

**Precautions:**

Activin A Receptor Type IB (ACVR1B) Antibody (Center) is for research use only and not for use in diagnostic or therapeutic procedures.

---