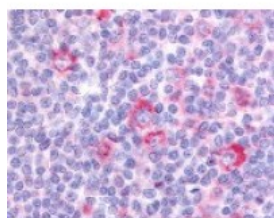




GPR62 Antibody

CATALOG NUMBER: 48-224



Immunohistochemistry staining of GPR62
in tonsil tissue using GPR62 Antibody.

Specifications

SPECIES REACTIVITY:	Human
TESTED APPLICATIONS:	ELISA, IHC
APPLICATIONS:	GPR62 antibody can be used in immunohistochemistry starting at 10 ug/mL.
USER NOTE:	Optimal dilutions for each application to be determined by the researcher.
SPECIFICITY:	BLAST analysis of the peptide immunogen showed no homology with other human proteins.
IMMUNOGEN:	GPR62 antibody was raised against a peptide located in the C-Terminal domain of GPR62 (Human).
HOST SPECIES:	Rabbit

Properties

PURIFICATION:	Immunoaffinity Chromatography
PHYSICAL STATE:	Liquid
BUFFER:	PBS, 0.1% sodium azide.
STORAGE CONDITIONS:	GPR62 antibody should be stored long term (months) at -80 °C and short term (days) at 4 °C. As with all antibodies avoid freeze/thaw cycles.
CLONALITY:	Polyclonal
CONJUGATE:	Unconjugated

Additional Info

ALTERNATE NAMES:	GPR62, G protein-coupled receptor 62, GPCR8, KPG_005, HGPCR8
ACCESSION NO.:	Q9BZJ7
PROTEIN GI NO.:	296434526
OFFICIAL SYMBOL:	GPR62
GENE ID:	118442

Background

BACKGROUND:	GPR62 is an Orphan-A GPCR with an unknown ligand.
--------------------	---

