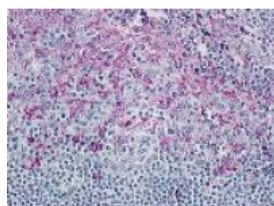




## CCR8 Antibody

CATALOG NUMBER: 48-226



Immunohistochemistry staining of CCR8 in tonsil tissue using CCR8 Antibody.

### Specifications

<b>SPECIES REACTIVITY:</b>	Gorilla, Human
<b>TESTED APPLICATIONS:</b>	ELISA, IHC
<b>APPLICATIONS:</b>	CCR8 antibody can be used in immunohistochemistry starting at 4.8 ug/mL.
<b>USER NOTE:</b>	Optimal dilutions for each application to be determined by the researcher.
<b>SPECIFICITY:</b>	BLAST analysis of the peptide immunogen showed no homology with other human proteins.
<b>IMMUNOGEN:</b>	CCR8 antibody was raised against a peptide located in the 3rd cytoplasmic domain of CCR8 (Human).
<b>HOST SPECIES:</b>	Rabbit

### Properties

<b>PURIFICATION:</b>	Immunoaffinity Chromatography
<b>PHYSICAL STATE:</b>	Liquid
<b>BUFFER:</b>	PBS, 0.1% sodium azide.
<b>STORAGE CONDITIONS:</b>	CR8 antibody should be stored long term (months) at -80 °C and short term (days) at 4 °C. As with all antibodies avoid freeze/thaw cycles.
<b>CLONALITY:</b>	Polyclonal
<b>CONJUGATE:</b>	Unconjugated

### Additional Info

<b>ALTERNATE NAMES:</b>	CCR8, C-C chemokine receptor type 8, CC chemokine receptor CHEMR1, CC-CKR-8, Chemokine (C-C) receptor 8, CDw198 antigen, CKRL1, CMKBR8, Chemokine receptor-like 1, CMKBRL2, CKR-L1, GPRCY6, TER1, C-C CKR-8, CC chemokine receptor 8, CC-chemokine receptor chemr1, CCR-8, CDw198, CY6, GPR-CY6
<b>ACCESSION NO.:</b>	P51685
<b>PROTEIN GI NO.:</b>	1707884
<b>OFFICIAL SYMBOL:</b>	CCR8
<b>GENE ID:</b>	1237

## Background

**BACKGROUND:** CCR8, a Chemokine Receptor, binds the CC-chemokine I-309, which is secreted by umbilical vein endothelial cells. CCR8 also binds viral monocyte inflammatory protein-1 (vMIP-1), which is induced by Kaposi sarcoma-related human herpesvirus-8. CCR8 induces endothelial chemotaxis and may function as an HIV-1 co-receptor on primary human cells, contributing to HIV-1-induced thymic pathogenesis (Lee et al., 2000).

---

**FOR RESEARCH USE ONLY**

December 13, 2016