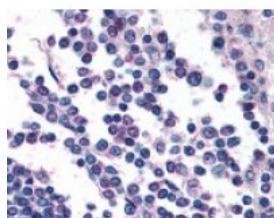




GPR132 Antibody

CATALOG NUMBER: 48-227



Immunohistochemistry staining of
GPR132 in spleen tissue using GPR132
Antibody.

Specifications

SPECIES REACTIVITY:	Human
TESTED APPLICATIONS:	ELISA, IHC
APPLICATIONS:	GPR132 antibody can be used in ELISA, and immunohistochemistry starting at 28 ug/mL.
USER NOTE:	Optimal dilutions for each application to be determined by the researcher.
SPECIFICITY:	BLAST analysis of the peptide immunogen showed no homology with other human proteins.
IMMUNOGEN:	GPR132 antibody was raised against a peptide located in the C-Terminal domain of GPR132 (Human).
HOST SPECIES:	Rabbit

Properties

PURIFICATION:	Immunoaffinity Chromatography
PHYSICAL STATE:	Liquid
BUFFER:	PBS, 0.1% sodium azide.
STORAGE CONDITIONS:	GPR132 antibody should be stored long term (months) at -80 °C and short term (days) at 4 °C. As with all antibodies avoid freeze/thaw cycles.
CLONALITY:	Polyclonal
CONJUGATE:	Unconjugated

Additional Info

ALTERNATE NAMES:	GPR132, G2A, G protein-coupled receptor 132, G protein-coupled receptor G2A, G2 accumulation protein, G2a receptor
ACCESSION NO.:	Q9UNW8
PROTEIN GI NO.:	37537754
OFFICIAL SYMBOL:	GPR132
GENE ID:	29933

Background

BACKGROUND:

G2A belongs to the Lysophospholipid/Lysosphingolipid Receptor family and is an anti-proliferative cell cycle regulator that plays a critical role in controlling peripheral lymphocyte homeostasis. Loss of G2A expression leads to the development of a late-onset autoimmune syndrome (Le et al, 2001). Lysophosphatidylcholine (LPC) is the activating ligand for G2A.

FOR RESEARCH USE ONLY

December 13, 2016