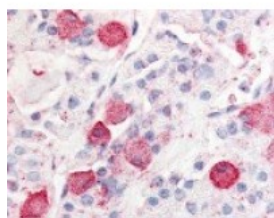




PRLHR Antibody

CATALOG NUMBER: 48-229



Immunohistochemistry staining of PRLHR
in anterior pituitary tissue using PRLHR
Antibody.

Specifications

SPECIES REACTIVITY:	Bovine, Dog, Gorilla, Human
TESTED APPLICATIONS:	IHC
APPLICATIONS:	PRLHR antibody can be used in Western Blot, immunohistochemistry starting at 20 ug/mL, and flow cytometry.
USER NOTE:	Optimal dilutions for each application to be determined by the researcher.
SPECIFICITY:	BLAST analysis of the peptide immunogen showed no homology with other human proteins.
IMMUNOGEN:	PRLHR antibody was raised against a peptide located in the 3rd extracellular domain of PRLHR (Human).
HOST SPECIES:	Rabbit

Properties

PURIFICATION:	Immunoaffinity Chromatography
PHYSICAL STATE:	Liquid
BUFFER:	PBS, 0.1% sodium azide.
STORAGE CONDITIONS:	PRLHR antibody should be stored long term (months) at -80 °C and short term (days) at 4 °C. As with all antibodies avoid freeze/thaw cycles.
CLONALITY:	Polyclonal
CONJUGATE:	Unconjugated

Additional Info

ALTERNATE NAMES:	PRLHR, G protein-coupled receptor 10, G-protein coupled receptor 10, GPR10, GR3, HGR3, PrRP receptor, PrRPR, Uhr-1
ACCESSION NO.:	P49683
PROTEIN GI NO.:	311033415
OFFICIAL SYMBOL:	PRLHR
GENE ID:	2834

Background

BACKGROUND:

Prolactin releasing hormone receptor (hGR3/GPR10) is a Releasing Hormone Receptor that controls the secretion of prolactin from the anterior pituitary.

FOR RESEARCH USE ONLY

December 13, 2016